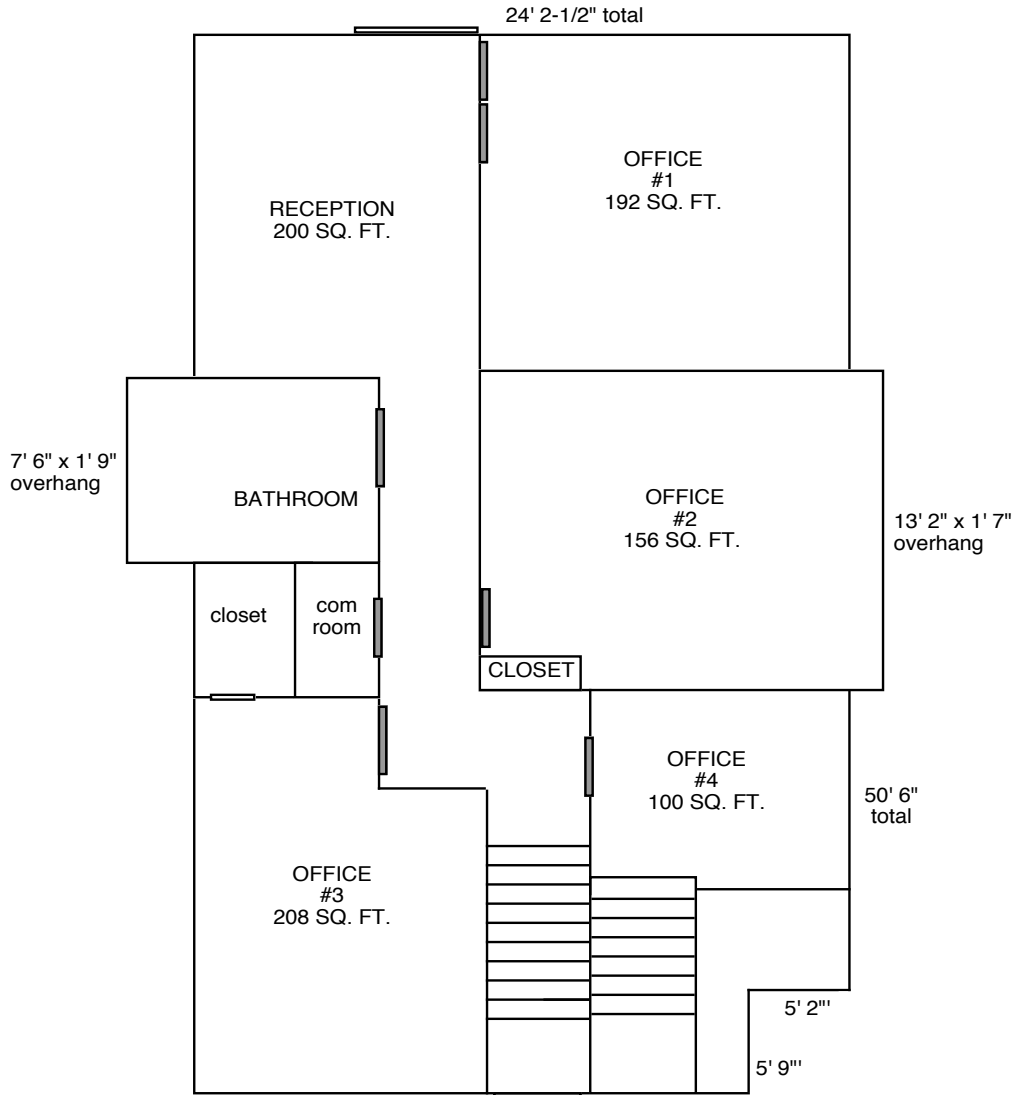


**550 CALIFORNIA AVENUE**  
**UPSTAIRS**

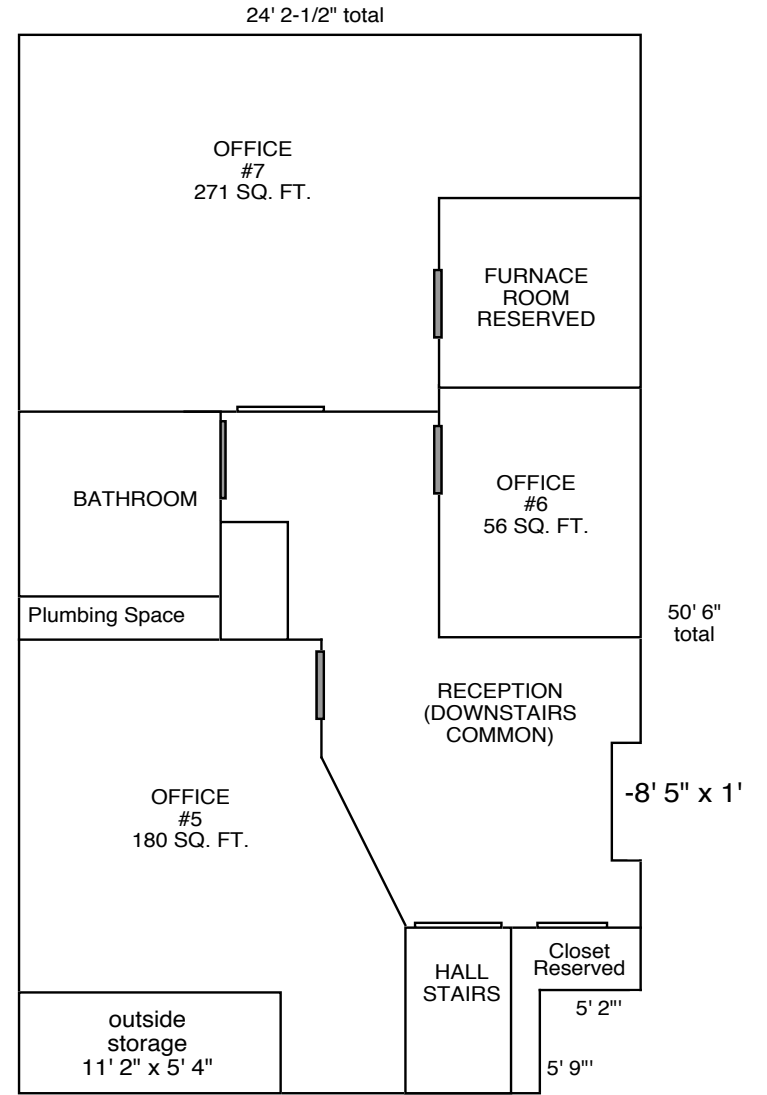


$24' 2\text{-}1/2'' \times 50' 6'' = 1,222.61 \text{ sf}$   
 $7' 6'' \times 1' 9'' = 13.13 \text{ sf}$   
 $13' 2'' \times 1' 7'' = 20.81 \text{ sf}$   
 $-5' 2'' \times 5' 9'' = -29.73 \text{ sf}$   
**total upstairs: 1,226.81 sf**

**total downstairs: 1,124.95 sf**

**total: 2,351.76sf**

**550 CALIFORNIA AVENUE**  
**DOWNSTAIRS**



$24' 2\text{-}1/2'' \times 50' 6'' = 1,222.61 \text{ sf}$   
 $-8' 5'' \times 1' = -8.42 \text{ sf}$   
 $-11' 2'' \times 5' 4'' = -59.51 \text{ sf}$   
 $-5' 2'' \times 5' 9'' = -29.73 \text{ sf}$   
**total downstairs: 1,124.95 sf**

**total upstairs: 1,226.81 sf**

**total: 2,351.76sf**